

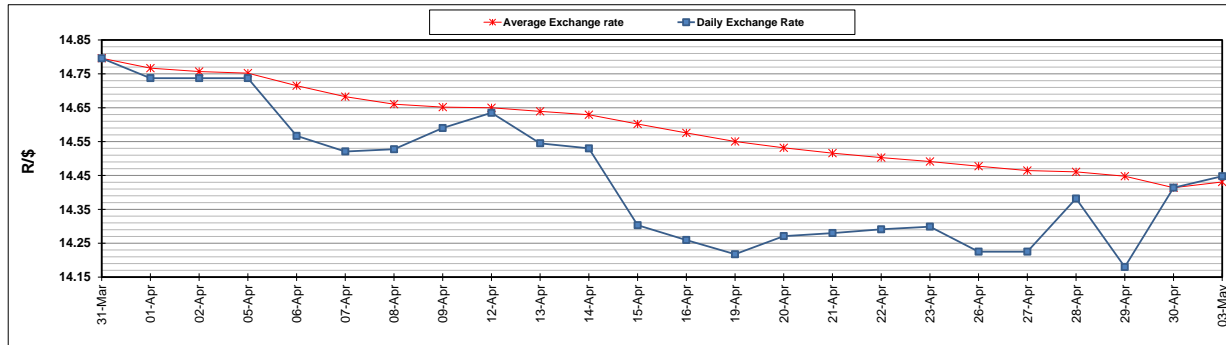
	PETROL 95 ULP	PETROL 93 ULP & LRP	DIESEL 0.05%	DIESEL 0.005%	ILL. PAR.
GAUTENG PUMP PRICE (SA c/l) AS FROM 05/05/2021	1,723.000	1,701.000	-	-	-
WHOLESALE PRICE (SA c/l) AS FROM 05/05/2021	-	-	1,446.620	1,450.020	857.488
SINGLE NATIONAL MAXIMUM RETAIL PRICE	-	-	-	-	1,076.000
BASIC FUEL PRICE - 03/05/2021 (SA c/l)	725.319	712.810	674.807	679.626	666.336
PRESS RELEASE CONTRIBUTION TO BFP 30/04/2021 - 03/05/2021 (SA c/l)	736.170	724.170	690.630	693.030	667.128
UNIT OVER/(UNDER) RECOVERY - 03/05/2021 (SA c/l)	10.851	11.360	15.823	13.404	0.792
AVERAGE BASIC FUEL PRICE 30/04/2021 - 03/05/2021	728.543	715.889	677.531	682.338	668.534
AVERAGE UNIT OVER/(UNDER) RECOVERY 30/04/2021 - 03/05/2021	7.627	8.282	13.100	10.693	(1.406)

### ANALYSIS MOVEMENT OF AVERAGE OVER/(UNDER) RECOVERY

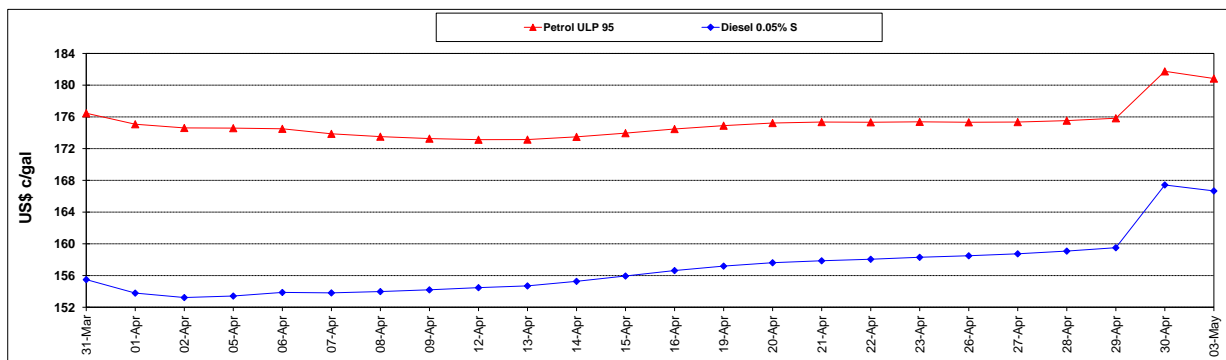
	PETROL 95	PETROL 93	DIESEL 0.05%	DIESEL 0.005%	ILL. PAR.
- MOVEMENT IN INTERNATIONAL PRODUCT PRICES	6.764	7.433	12.296	9.883	(2.198)
- MOVEMENT IN EXCHANGE RATE	0.863	0.848	0.803	0.809	0.792
AVERAGE UNIT OVER/(UNDER) RECOVERY 30/04/2021 - 03/05/2021	7.627	8.282	13.100	10.693	(1.406)

### R/\$ EXCHANGE RATE - (R/\$14.4478- 03/05/2021)

#### EXCHANGE RATE USED IN BASIC FUEL PRICE



#### INTERNATIONAL PRODUCT PRICES OF BASKET USED IN BASIC FUEL PRICE



#### BASIC FUEL PRICE IN SA CENTS PER LITRE

